

C1 specification - Chair

CODE: C1

ITEM: Chair

LOCATION: Library 130

QUANTITY: 11

MANUFACTURER: Global

MODEL: Erin (GC36532, CF77, NLW, NM, SSS, MB)



DESCRIPTION: upholstered armchair with wood legs, moisture barrier and sealed seat seams

FINISH/COLOR: Seat fabric: Grade 4, Bleach Cleanable, 100,000 double rubs (to be selected)
Back fabric: Grade 4, Bleach Cleanable, 1000,00 double rubs (to be selected)
Legs: Wood, (finish to be selected)

DIMENSIONS: 24" W x 22" D x 34.25" H, Seat 19"W x 18.5"D x 18.5" H

WARRANTY: Lifetime Warranty except 5-year warranty on foam and textiles
Warranty applies to single shift standard commercial usage (8hrs/day, 5 days/week)

ADDITIONAL INFORMATION: Provide glides suitable for both carpeted and hard-surface floors.

C2 specification – Multipurpose Swivel Chair with Casters

CODE: C2

ITEM: Multipurpose Swivel Chair with Casters, armless

LOCATION: Library, Meeting Room



QUANTITY: 5 (Library) 6 (Meeting Room)

MANUFACTURER: OFS

MODEL: Harpin MID BACK – UPHOLSTERED 85015-M, Swivel base

DESCRIPTION: Task chair, midback upholstered back and seat

FINISH/COLOR: Base: PAL - Polished Aluminum
Upholstery: Grade 2 TBD

DIMENSIONS: 19.5" W x 22.75" D x 35.25" H

Seat: 19.5" W x 17.25" D 17.75" H

Back Height 21"

Back Width 18

Weight 16 lbs.

WARRANTY:

ADDITIONAL INFORMATION: Provide casters suitable for both carpeted and hard-surface floors.

C2A specification – Multipurpose Swivel Chair with Casters

CODE: C2A

ITEM: Multipurpose Swivel Chair with Casters, with arms

LOCATION: Meeting Room



QUANTITY: 2 (Meeting Room)

MANUFACTURER: OFS

MODEL: Harpin MID BACK – UPHOLSTERED 85015-M, Swivel base

DESCRIPTION: Task chair, midback upholstered back and seat with arms

FINISH/COLOR: Base: PAL - Polished Aluminum, Arms – A2J – Polished Chrome
Upholstery: Grade 2 TBD

DIMENSIONS: 24.5" W x 22.75" D x 35.25" H

Seat: 19.5" W x 17.25" D 18.5"H

Back Height 21"

Back Width 18

Arm Height 7.5, 26" from floor

Weight 25 lbs.

WARRANTY:

ADDITIONAL INFORMATION: Provide casters suitable for both carpeted and hard-surface floors.

C3 specification - Task Chair

CODE: C3

ITEM: Task chair

LOCATION: Reception 102, Admin 123, Offices



QUANTITY: 18

MANUFACTURER: Sit On It

MODEL: Wit 2222 F A128 B1 FG4 CS6 B21 MC36 FC13 Z7 KD

DESCRIPTION: Task chair, Mesh Back, Mid back with Adjustable Lumbar, Height adjustable arms, standard synchro mechanism, standard cylinder

FINISH/COLOR: Frame: Fog

Mesh Color: Frost Woven Striped (to be confirmed)

Upholstery: Grade 4 Faux Felt (to be confirmed) color TBD

DIMENSIONS: 26" W x 26" D x 36.75" H

Seat: 20" W x 17.5" D Seat Height: 17.5-21.25 (F/T) 16.63-20.38 (B), 17.75-21.5 (F/E3)

Back Height 19"

Back Width 18.75"

Weight 36 lbs.

WARRANTY: 12 years

ADDITIONAL INFORMATION: Provide casters suitable for both carpeted and hard-surface floors.

C3A specification - Task Chair Stool

CODE: C3

ITEM: Task chair

LOCATION: Office 129



QUANTITY: 1

MANUFACTURER: Sit On It

MODEL: Wit Mid Back Task Stool 2222 S1/S2

DESCRIPTION: Task stool, Mesh Back, Mid back with Adjustable Lumbar, Height adjustable arms, standard synchro mechanism, standard cylinder

FINISH/COLOR: Frame: Fog
Mesh Color: Frost Woven Striped (to be confirmed)
Upholstery: Grade 4 Faux Felt (to be confirmed) color TBD

DIMENSIONS: 27" W x 27" D x 45.63/50" H

Seat: 20" W x 17.5" D

Seat Height: 22-30", 26-36"

Back Height 18.75"

Back Width 19"

Weight 34.5/35.5 lbs.

WARRANTY: 12 years

ADDITIONAL INFORMATION: Provide casters suitable for both carpeted and hard-surface floors.

C4A specification – Guest Chair

CODE: C4A

ITEM: Multipurpose Chair, Armless

LOCATION: Activity rooms



QUANTITY: 8 (Activity #1), 12 (Activity # 2), 23 (Activity #3)

MANUFACTURER: Sit On It

MODEL: Wit 2221 FT1 MB FC2 US AR0 Side Chair

DESCRIPTION: Stackable chair with mesh back and upholstered seat

FINISH/COLOR: Frame: Fog
Mesh Color: To be selected.
Upholstery: Grade 4 Faux Felt (to be confirmed) color TBD

DIMENSIONS: 19.25" W x 23" D x 33.75" H

Seat: 18.5" W x 16.25" D

Seat Height: 18.53"

Back Height 17"

Back Width 19.25"

Weight 15.5 lbs.

WARRANTY: 12 years

ADDITIONAL INFORMATION: Provide high performance glides suitable for both carpeted and hard-surface floors.

C4B specification – Guest Chair

CODE: C4B

ITEM: Guest Chair with arms

LOCATION: Offices, Activity Rooms



QUANTITY: 19 (offices), 8 (Activity #1), 14 (Activity # 3)

MANUFACTURER: Sit On It

MODEL: Wit 2221 FT1 MB FC2 US AR1 Side Chair with arms

DESCRIPTION: Stackable chair with mesh back and upholstered seat

FINISH/COLOR: Frame: Fog
Mesh Color: To be selected.
Upholstery: Grade 4 Faux Felt (to be confirmed) color TBD

DIMENSIONS: 22.25" W x 23" D x 33.75" H

Seat: 18.5" W x 16.25" D

Seat Height: 18.53"

Back Height 18.75"

Back Width 19"

Weight 19.5 lbs.

WARRANTY: 12 years

ADDITIONAL INFORMATION: Provide high performance glides suitable for both carpeted and hard-surface floors.

C5 specification – Cafe Chair

CODE: C5

ITEM: Guest Chair Armless

LOCATION: Lounge 105



QUANTITY: 11

MANUFACTURER: National

MODEL: Grin N49GUW

DESCRIPTION: Upholstered armless chair with stitching and wood legs

FINISH/COLOR: Frame: Wood finish to be selected.
Upholstery: Grade 5, Bleach Cleanable, 100,000 double rubs, color TBD

DIMENSIONS: 19 3/4" W X 22 1/2" D X 32 3/4" H
Seat: 18 1/4" W x 17" D x 18 1/4" H
Back: 16 3/4" W x 17" H
Weight: 24 lbs.

WARRANTY: Ten (10) Year Warranty CONFIRM

ADDITIONAL INFORMATION: Provide high performance glides suitable for both carpeted and hard-surface floors.

C5 Alternate specification – Cafe Chair

CODE: C5(Alt)

ITEM: Café Chair Armless

LOCATION: Lounge 105



QUANTITY: 11

MANUFACTURER: Blu Dot

MODEL: SideBySide

DESCRIPTION: Wood with walnut or white oak veneer seat and back
Round steel tube frame
Plastic glides on feet to protect surfaces
Stackable up to 4 chairs high for easy storage
BIFMA rated

FINISH/COLOR: Frame: Wood finish to be selected.

DIMENSIONS: 19" W x 20" D x 31"H
Seat: 17" W x 17" D x 18"H
Back: 18" W x 0.5" D x 13"H
Leg: 16" H
Weight: 24 lbs.

WARRANTY: Ten (10) Year Warranty CONFIRM

ADDITIONAL INFORMATION: Provide glides suitable for both carpeted and hard-surface floors.

C6 specification – Cafe Stool

CODE: C6

ITEM: Counter Height Stool, armless

LOCATION: Lounge 105



QUANTITY: 2

MANUFACTURER: National

MODEL: Grin N49CUW

DESCRIPTION: Upholstered armless stool with stitching and wood legs

FINISH/COLOR: Frame: Wood finish to be selected.

Upholstery: Grade 5, Bleach Cleanable, 100,000 double rubs, color TBD

DIMENSIONS: 18 1/2" W X 18 3/4" D X 30 1/4" H

Seat: 18 3/4" W x 15 3/4" D x 23 3/4" H

Back: 14 3/4" W x 7 1/4" H

Weight: 24 lbs.

WARRANTY: Ten (10) Year Warranty CONFIRM

ADDITIONAL INFORMATION: Provide high performance glides suitable for both carpeted and hard-surface floors.

C7 specification – Cafe Chair

CODE: C7

ITEM: Dining Chair with arms

LOCATION: Lobby 101, Lounge 105



QUANTITY: 6

MANUFACTURER: Blu Dot

MODEL: Host Dining Chair

DESCRIPTION: Upholstered armchair with wood legs

FINISH/COLOR: Frame: Wood finish to be selected.

Upholstery: 100,000 double rubs, fabric to be selected

DIMENSIONS: 24"W x 21"D x 30"H

Seat: 18"W x 16"D x 17"H

Back: 16"W x 1"D x 14"H

Leg: 16"

Weight: 26 lbs.

WARRANTY: Five (5) Year Warranty

ADDITIONAL INFORMATION: Provide high performance glides suitable for both carpeted and hard-surface floors.

C8A specification – Banquet Chair (armless)

CODE: C8A

ITEM: Banquet Chair – Armless

LOCATION: Multi-Purpose Room 107,



QUANTITY: 75

MANUFACTURER: Shelby Williams

MODEL: 9202

DESCRIPTION: Aluminum Stackable chair with upholstered seat and upholstered back
Powder coat frame finish
High density molded foam seat
Holds up to 350 pounds
Chairs stack 5 high
Nickel rubber cushion glides
Frame consists of approximately 25-30% recycled content

FINISH/COLOR: Seat fabric: Grade 4
Back: Grade 4
Arms/legs: TBD

DIMENSIONS: 20"W x 23"D x 37"H, 19"SH

WARRANTY: Ten (10) Year Warranty CONFIRM

ADDITIONAL INFORMATION:

Provide glides suitable for both carpeted and hard-surface floors.
Provide sample loaner chair for testing and approval before ordering.

C8B specification – Banquet Chair (with arms)

CODE: C8B

ITEM: Banquet Chair – With Arms

LOCATION: Multi-Purpose Room 107,
Activity Room #1 235, Activity Room #2 237, Activity Room #3 208



QUANTITY: 75

MANUFACTURER: Shelby Williams

MODEL: 9202

DESCRIPTION: Aluminum Stackable chair with upholstered seat and upholstered back
Powder coat frame finish
High density molded foam seat
Holds up to 350 pounds
Chairs stack 5 high
Nickel rubber cushion glides
Frame consists of approximately 25-30% recycled content

FINISH/COLOR: Seat fabric: Grade 4
Back: Grade 4
Arms/legs: TBD

DIMENSIONS: 20"W x 23"D x 37"H, 19"SH

WARRANTY: Ten (10) Year Warranty CONFIRM

ADDITIONAL INFORMATION:

Provide glides suitable for both carpeted and hard-surface floors.
Provide sample loaner chair for testing and approval before ordering.

C9 specification – Stacking Chair

CODE: C9

ITEM: Stacking chair

LOCATION: Art 205



QUANTITY: 24

MANUFACTURER: KI

MODEL: Strive 4 Legged Stacker KI-SLNAP

DESCRIPTION: Polypropylene seat and back with flex back, four metal legs

FINISH/COLOR: To be selected

DIMENSIONS:	Outside	W203/4" D213/4" H321/2" Seat:
	Seat	W18" D18" H18"
	Weight	? lbs.

WARRANTY: Fifteen (15) Year Warranty

ADDITIONAL INFORMATION: Provide glides suitable hard-surface floors.
Provide sample loaner chair for testing and approval before ordering.

C10 specification – Side Chair

CODE: C10

ITEM: Upholstered Side Chair With Arms

LOCATION: Common 201



QUANTITY: 4

MANUFACTURER: OFS

MODEL: 108137

DESCRIPTION: Upholstered armchair with wood legs, Molded plywood seat and back

FINISH/COLOR: C4S - Turned wood leg base with metal x-stretchers – finish to be selected

Frame: Wood finish to be selected.

Upholstery: Grade 3, 100,000 double rubs, fabric to be selected

DIMENSIONS: Outside 24" W x 25.25" D x 33.25" H

Seat 19.5" W x 20" D x 17.75" H

Arm height from floor 26.5"

Weight 29 lbs.

WARRANTY: Ten (10) Year Warranty CONFIRM

ADDITIONAL INFORMATION: Provide high performance glides suitable for both carpeted and hard-surface floors.

C11 specification – Stools

CODE: C11

ITEM: Stool

LOCATION: Ceramics 206, Kitchen 111



QUANTITY: 8

MANUFACTURER: KI

MODEL: Grazie Stack Seating GLSNAP (24" or 30" seat height to be confirmed)

DESCRIPTION: Four-Leg Armless Cafe Stool Polypropylene
With ergonomic articulation (Perfect Pivot)

FINISH/COLOR: to be selected

DIMENSIONS: Outside 22-3/16" W x 21-5/16" D x 38-5/8" or 44-5/8" H
Seat 18 1/2" W x 18 5/16" D x 23 3/4" or 29 3/4" H

Weight ? lbs.

WARRANTY: Ten (10) Year Warranty CONFIRM

ADDITIONAL INFORMATION: Provide glides suitable for hard-surface floors.
Confirm height with tables.

C12 specification – Game Room Armless Chair

CODE: C12

ITEM: Chair

LOCATION: Game Room 317



QUANTITY: 8

MANUFACTURER: Fairfield

MODEL: 8740-05

DESCRIPTION: Transitional armless chair with exposed wood framing the back and flowing down the sides with a notched opening at the top back edge. Standard 2" Channel Quilt on Outside

BackMaterials: Beech Solids

Finish options: Standard Upholstery Finishes and FairShield+ Finishes

Seat construction: Tight Seat

Back construction: Tight Back

Spring construction: Flat Springs

FINISH/COLOR: Frame: Wood finish to be selected.

Upholstery: Grade 3, 100,000 double rubs, fabric to be selected

DIMENSIONS: Outside: 22.5" W x 25" D x 33.5" H

Seat: 18" W x 19.50" D x 19.5" H

Inside back height: 14"

Weight 23 lbs.

WARRANTY: Ten (10) Year Warranty CONFIRM

ADDITIONAL INFORMATION: Provide glides suitable for both carpeted and hard-surface floors.

C12A specification – Game Room Arm Chair

CODE: C12

ITEM: Chair

LOCATION: Game Room 317



QUANTITY: 4

MANUFACTURER: Fairfield

MODEL: 8741-04

DESCRIPTION: Transitional arm chair with exposed wood framing the back and flowing down the sides with a notched opening at the top back edge. Standard 2" Channel Quilt on Outside

BackMaterials: Beech Solids

Finish options: Standard Upholstery Finishes and FairShield+ Finishes

Seat construction: Tight Seat

Back construction: Tight Back

Spring construction: Flat Springs

FINISH/COLOR: Frame: Wood finish to be selected.

Upholstery: Grade 3, 100,000 double rubs, fabric to be selected

DIMENSIONS: Outside: 24" W x 26" D x 33" H

Seat: 18" W x 20" D x 19.5" H

Inside back height: 13.5"

Weight 24 lbs.

WARRANTY: Ten (10) Year Warranty CONFIRM

ADDITIONAL INFORMATION: Provide glides suitable for both carpeted and hard-surface floors.

C13 specification – Game Room Bar Height Stool

CODE: C13

ITEM: Bar Height Stool

LOCATION: Game Room 317



QUANTITY: 4

MANUFACTURER: Fairfield

MODEL: Anthony Bar Stool 8740-07

DESCRIPTION: Transitional arm chair with exposed wood framing the back and flowing down the sides with a notched opening at the top back edge. Standard 2" Channel Quilt on Outside

BackMaterials: Beech Solids

Finish options: Standard Upholstery Finishes and FairShield+ Finishes

Standard seat: High Resiliency 40

Standard back: High Resiliency 20

Seat construction: Tight Seat

Back construction: Tight Back

Spring construction: Flat Springs

FINISH/COLOR: Frame: Wood finish to be selected.

Upholstery: Grade 3, 100,000 double rubs, fabric to be selected

DIMENSIONS: Outside: 21.5" W x 22" D x 43.5" H

Seat: 17.5" W x 17.5" D x 30" H

Inside back height: 13.5"

Weight 35 lbs.

Arm height: 30"

WARRANTY: Ten (10) Year Warranty CONFIRM

ADDITIONAL INFORMATION: Provide glides suitable for both carpeted and hard-surface floors.

C14 specification – Lounge Chair

CODE: C14

ITEM: Lounge Chair

LOCATION: Game Room 317



QUANTITY: 1

MANUFACTURER: Global

MODEL: Collingwood GC36510

DESCRIPTION: Low back, four-leg lounge chair, rounded back, cleanout at back of seat and impervious under seat layer for ease of cleaning. Sealed seams option (on seat and/or back), Moisture barrier liner (on seat), Interlocking puzzle box construction, Plywood seat frame, 1 in (25 mm) thick, 7-ply, Synthetic woven webbing suspension system under seat, Curved plywood back, 1 in (25 mm) thick, 7-ply

FINISH/COLOR: Wood legs: finish to be selected
Upholstery: Grade 4 to be selected, Bleach cleanable, 100,000 double rubs

DIMENSIONS: Outside: 28" W x 27.25" D x 31" H
Seat: 21" W x 19" D x 18" H
Inside back height: 12.5"
Arm height from seat: 8"
Weight 42 lbs.

WARRANTY: Lifetime warranty on all components except the following: 5 year warranty on foam and textiles. Warranty applies only to single shift, standard commercial usage (8 hours/day, 5 days/week)

ADDITIONAL INFORMATION: Provide glides suitable for both carpeted and hard-surface floors.

C15 specification – Conference Chair Alternate

CODE: C15

ITEM: Conference Chair

LOCATION: Meeting 239 (Alternate from C-2 and C2A)



QUANTITY: 8

MANUFACTURER: National

MODEL: N42ME8S Karid

DESCRIPTION: EXECUTIVE MID BACK CONFERENCE ARMS SYNCHRONOUS - features an ultra-plush seat foam and curved back profile and horizontal channel stitch. Ergonomic features and adjustments include Synchro Tilt, Pneumatic lift, and Tension control.

FINISH/COLOR: Base: 497 Polished Aluminum

Casters: C62 Hard 65mm Polished/Black Dual Wheel for Use On Carpet

Upholstery: Grade 3 to be selected

DIMENSIONS: Outside: 25.25" W x 25.5" D x 38.75" H

Seat: 19.25" W x 18.25" D x 19.25" H

Arm Height: 24" Arm Width 2"

Weight 45.9 lbs.

WARRANTY: Ten (10) Year Warranty CONFIRM

C16 specification – Multi-use Chair

CODE: C16

ITEM: Fitness Chair

LOCATION: Fitness 303, Walking Track, Gym



QUANTITY: 24 (Fitness), 8 (Walking Track), 24 (Gym) = 56 total

MANUFACTURER: Flash Furniture

MODEL: HERCULES Series Trapezoidal Back Stacking Banquet Chair with 1.5" Thick Seat
Item # FD-BHF-2-GG

DESCRIPTION: Multi-use chair with 16-gauge steel frame and vinyl upholstered polyurethane foam cushions, fixed square seat, and trapezoidal mid back

FINISH/COLOR: Frame: Steel with black powder coated finish
Upholstery: vinyl color to be selected

DIMENSIONS: Outside: 17.5" W x 20.25" D x 34" H
Seat: 15.5" W x 15.75" D x 18" H
Inside back height: 15.5"
Weight 12 lbs.

WARRANTY: Ten (10) Year Warranty CONFIRM

ADDITIONAL INFORMATION: 500 lb. weight capacity, Stacks 10 high, ANSI BIFMA certified, CAL 117 Certified,
Provide glides suitable for both carpeted and hard-surface floors.

CD1 specification - Chair Dolly

CODE: CD1

ITEM: Chair dolly

LOCATION: Storage 106, Gym Storage 226, Fitness Storage 304,



QUANTITY: 11

MANUFACTURER: KFI Seating (from School Outfitters)

MODEL: KFI-DLY-UNV Universal Stack Chair dolly

DESCRIPTION: Dolly for C8A, C8B, and C16 chairs, Capacity: about 10 chairs

CONSTRUCTION: Steel base with 4 rubber swivel casters

FINISH/COLOR: Powder-coated black

DIMENSIONS: 4" H x 23" W x 23" D

WEIGHT: 26 lbs.

WARRANTY: Twelve (12) Year limited warranty

OTHER: Confirm compatibility with chairs to be purchased.

SF-1 specification - Sofa

CODE: SF-1

ITEM: Sofa

LOCATION: Library 130



QUANTITY: 2

MANUFACTURER: Blu Dot

MODEL: Paramount 66" Sofa

DESCRIPTION: Upholstered, 2 seater, double armed sofa. Solid hardwood and wood frame, Tufted seat cushion, Loose back cushions, Stainless steel or blackened metal finish steel legs

FINISH/COLOR: Legs: Stainless steel
Upholstery: 85,000 Double Rubs, color: TBD

DIMENSIONS: Overall: 66" W x 32" D x 32" H
Seat : 59" W x 21" D x 17" H
Arm : 4" W x 26" H
Back: 59" W x 13" D x 15" H
Leg : 8" H

WARRANTY: Five (5) Year Warranty

ADDITIONAL INFORMATION: Provide glides suitable for both carpeted and hard-surface floors.

SF-2 specification - Sofa

CODE: SF-2

ITEM: Sofa

LOCATION: Lobby 101, Lounge 105



QUANTITY: 2

MANUFACTURER: Blu Dot

MODEL: Paramount 95" Sofa

DESCRIPTION: Upholstered, 3 seater, double armed sofa. Solid hardwood and wood frame, Tufted seat cushion, Loose back cushions, Stainless steel or blackened metal finish steel legs

FINISH/COLOR: Legs: Stainless steel
Upholstery: 85,000 Double Rubs, color: TBD

DIMENSIONS: Overall: 95" W x 34" D x 32" H
Seat : 89" W x 21" D x 17" H
Arm : 4" W x 26" H
Back: 89" W x 13" D x 15" H
Leg : 8" H

WARRANTY: Five (5) Year Warranty

ADDITIONAL INFORMATION: Provide glides suitable for both carpeted and hard-surface floors.

SF-3 specification – Lounge Chair

CODE: SF-3

ITEM: Lounge Chair

LOCATION: Lobby 101, Lounge 105



QUANTITY: 4

MANUFACTURER: Davis

MODEL: GL-25 Ginkgo Ply Lounge Chair

DESCRIPTION: Low Back, Wood Base, Fully Upholstered, All Same Material

FINISH/COLOR: Legs: Wood finish to be selected
Upholstery Grade D: 85,000 Double Rubs, color: TBD

DIMENSIONS: Overall: 27 1/2" W x 27 1/2" D x 29 1/8" H
Inside : 16 1/2" W x 19 1/2" D x 15" H
Arm : 22 3/8" H
Seat: 16 1/4" H

WARRANTY: Ten (10) Year Warranty (CONFIRM)

ADDITIONAL INFORMATION: Provide glides suitable for both carpeted and hard-surface floors.
Note: Photo shows wood on back, but specification is for fully upholstered chair.

SF-4 specification – Lounge Chair

CODE: SF-4

ITEM: Lounge Chair

LOCATION: Lounge 105



QUANTITY: 2

MANUFACTURER: Davis

MODEL: AL-1000-PA A-Lounge

DESCRIPTION: Base:Aluminum die cast legs, Shell:Molded foam over welded tubular frame with sinuous springs.

Upholstery: All graded in and COM/COL fabric must be approved for use on A-Lounge by the Davis factory.

FINISH/COLOR: Base: Polished Aluminum

Upholstery Grade D: 85,000 Double Rubs, color: TBD

DIMENSIONS: Overall: 27 3/4" W x 28 1/4" D x 30 3/8" H

Inside : 26 1/2" W x 20 1/2" D x 14 1/8" H

Arm : 22 3/8" H

Seat: 17 1/4" H

WARRANTY: Ten (10) Year Warranty (CONFIRM)

ADDITIONAL INFORMATION: Provide glides suitable for both carpeted and hard-surface floors.

SF-5 specification - Sofa

CODE: SF-5

ITEM: Sofa

LOCATION: Game Room 317



QUANTITY: 1

MANUFACTURER: Fairfield

MODEL: Norwood Loveseat 6197-70

DESCRIPTION: Upholstered, 2-seater, double armed sofa, with clean-out seat. Beech Solid hardwood Legs, Standard Upholstery Finishes and FairShield+ Finishes

FINISH/COLOR: Legs: Wood finish to be selected
Upholstery: Grade G, Water based and Bleach Cleanable, 100,000 Double Rubs,
color: TBD

DIMENSIONS: Overall: 70" W x 28.25" D x 31.5" H
Seat : 64" W x 19" D x 18.75" H
Arm : 25" H
Back: 89" W x 13" D x 15" H
Inside back height: 13.5"

WARRANTY: Ten (10) Year Warranty (CONFIRM)

ADDITIONAL INFORMATION: Provide glides suitable for hard-surface floors.

Provide (2) 18" square accent pillows 0218-BD, Fabric to be selected

SF-6 specification – Bench

CODE: SF-6

ITEM: Bench

LOCATION: Lounge 105



QUANTITY: 2

MANUFACTURER: Blu Dot

MODEL: Chip Bench

DESCRIPTION: Upholstered foam wrapped wood seat and back with solid wood legs; walnut, or white oak, BIFMA rated

FINISH/COLOR: Frame: Wood finish to be selected.
Upholstery: 50,000 double rubs, fabric to be selected

DIMENSIONS: 50" W x 19" D x 27" H
Seat: 50" W x 16" D x 19" H
Back: 49" W x 2" D x 8" H
Leg: 17"
Weight: 40 lbs.

WARRANTY: Five (5) Year Warranty

ADDITIONAL INFORMATION: Provide glides suitable for both carpeted and hard-surface floors.

SF-7 specification – Bench

CODE: SF-7

ITEM: Bench

LOCATION: Common 201



QUANTITY: 2

MANUFACTURER: Westminster Teak

MODEL: SF-7 – 13917 - 6 ft Laguna Teak Backless Bench

DESCRIPTION: Natural solid teak bench with slats, 100% Grade A Plantation Teak

FINISH/COLOR: Natural

DIMENSIONS: SF-7: 72" W x 15 1/2" D x 18" H
Weight: 36 lbs.

WARRANTY: Teak	Lifetime *
Stainless Steel	5 years
Textilene	3 years
Woven Products (Synthetic Wicker)	3 years
Sunbrella Fabric	5 years
Cushions/Parasol	1 Year Manufacturer's Warranty on Stitching
Brass	3 years

ADDITIONAL INFORMATION: Provide glides suitable for hard-surface floors.

SF-7A specification – Bench

CODE: SF-7A

ITEM: Bench

LOCATION: Vestibule 100, Corridor 202, Lockers 312



QUANTITY: 3

MANUFACTURER: Westminster Teak

MODEL: SF-7A –13915 - 4 ft Laguna Teak Backless Bench with cushion 73810MTO

DESCRIPTION: Natural solid teak bench with slats, 100% Grade A Plantation Teak

FINISH/COLOR: Natural

DIMENSIONS: 48" W x 15 1/2" D x 17.75" H
Weight: 27 lbs.

WARRANTY: Teak	Lifetime *
Stainless Steel	5 years
Textilene	3 years
Woven Products (Synthetic Wicker)	3 years
Sunbrella Fabric	5 years
Cushions/Parasol	1 Year Manufacturer's Warranty on Stitching
Brass	3 years

ADDITIONAL INFORMATION: Provide glides suitable for hard-surface floors and carpet.

SF-8 and SF-8A specification – Ottoman

CODE: SF-8 and 8A

ITEM: Ottoman

LOCATION: Lounge 301



QUANTITY: 1 each

MANUFACTURER: Blu Dot

MODEL: SF-8 – Large Bumper Ottoman
SF-8A – Small Bumper Ottoman

DESCRIPTION: Padded wood frame. Aniline leather with a soft matte finish and velvety feel.

FINISH/COLOR: Upholstery to be selected.

DIMENSIONS: SF-8A 17" w x 17" d x 17" h, 12 lbs.
SF-8 26" l x 26" w x 15" h, 23 lbs.

WARRANTY: Five (5) Year Warranty

ADDITIONAL INFORMATION: Provide glides suitable for carpet and hard-surface floors.

T1 specification –Table

CODE: T1

ITEM: Rectangular Coffee Table

LOCATION: Library 130, Lounge 105



QUANTITY: 2

MANUFACTURER: West Elm Contract

MODEL: Stowe Rectangle Coffee Table (44") SKU: 4957524

DESCRIPTION: Rectangle Coffee Table, Kiln-dried solid mango wood. Adjustable levelers on base.

FINISH/COLOR: Select finish: Cool Walnut

DIMENSIONS: 44"w x 24"d x 15"h 26.6 lbs.

WARRANTY: Ten (10) Year Warranty CONFIRM

ADDITIONAL INFORMATION: Provide swatches of wood samples before ordering.

T2 specification –Library Table

CODE: T2

ITEM: Square Table

LOCATION: Library 130



QUANTITY: 3

MANUFACTURER: Spec

MODEL: Post Legs 42 x 42 SQ PLO HBVR

DESCRIPTION: Square table: wood veneer top with square corners, hardwood bevel reverse rim, and oval metal legs

FINISH/COLOR: Wood top Finish to be selected, Metal leg finish to be selected.

DIMENSIONS: 42" W x 42" D x 29" H

WARRANTY: Ten (10) Year Warranty CONFIRM

ADDITIONAL INFORMATION: Provide swatches of wood samples before ordering.
Price alternate: HPL top.

T3 specification –Library Table

CODE: T3

ITEM: Rectangular Table

LOCATION: Library 130



QUANTITY: 1

MANUFACTURER: Spec

MODEL: Post Legs 36 x 48 RE PLO HBVR

DESCRIPTION: Rectangular table: wood veneer top with square corners, hardwood bevel reverse rim, and oval metal legs

FINISH/COLOR: Wood top Finish to be selected, Metal leg finish to be selected

DIMENSIONS: 36" W x 48" D x 29" H

WARRANTY: Ten (10) Year Warranty CONFIRM

ADDITIONAL INFORMATION: Provide swatches of wood samples before ordering.
Price alternate: HPL top.

T4 specification –Side Table

CODE: T4

ITEM: Round Side Table

LOCATION: Library 130



QUANTITY: 2

MANUFACTURER: West Elm Contract Grade

MODEL: Round Side Table SKU: 5658337

DESCRIPTION: Round Side Table, Kiln-dried solid mango wood. Adjustable levelers on base.

FINISH/COLOR: Select finish: Cool Walnut

DIMENSIONS: 18"diam. x 22"h

WARRANTY: Ten (10) Year Warranty CONFIRM

ADDITIONAL INFORMATION: Provide swatches of wood samples before ordering.

T5 specification –Side Table

CODE: T5

ITEM: Square Table

LOCATION: Restrooms

QUANTITY: 17

MANUFACTURER:

MODEL:

DESCRIPTION: Square side table

FINISH/COLOR: Select finish

DIMENSIONS: 12" W x 12" D x

WARRANTY: Ten (10) Year Warranty CONFIRM

ADDITIONAL INFORMATION:

T6 specification –Coffee Table

CODE: T6

ITEM: Round End Table

LOCATION: Lobby 101



QUANTITY: 1

MANUFACTURER: West Elm Contract Grade

MODEL: Stowe Cool Walnut 46 Inch Round Coffee Table, SKU: SKU: 6832540

DESCRIPTION: Round Coffee Table, Kiln-dried solid mango wood. Adjustable levelers on base.

FINISH/COLOR: Select finish: Cool Walnut

DIMENSIONS: 46" diam. x 15" h., 47 lbs.

WARRANTY: Ten (10) Year Warranty CONFIRM

ADDITIONAL INFORMATION: Provide swatches of wood samples before ordering.

T7 specification –Side Table

CODE: T7

ITEM: Round Side Table

LOCATION: Lobby 101, Lounge 105



QUANTITY: 5

MANUFACTURER: West Elm Contract Grade

MODEL: Round Side Table, SKU: 693322

DESCRIPTION: Round Side Table, Kiln-dried solid mango wood. Adjustable levelers on base.

FINISH/COLOR: Select finish: Cool Walnut

DIMENSIONS: 22" diam. x 18" h.

WARRANTY: Ten (10) Year Warranty CONFIRM

ADDITIONAL INFORMATION: Provide swatches of wood samples before ordering.

T8 specification –Cafe Table - Round

CODE: T8

ITEM: Round Cafe Table

LOCATION: Lobby 101, Lounge 105



QUANTITY: 5

MANUFACTURER: Superior Seating

MODEL: Solid Ash Plank Table Top SKU: TWG-PL-AW
Cross Cast Iron and Steel Black Commercial Table Base SKU: YO-BLK-2222

DESCRIPTION: Round cafe table with solid wood top and metal base. Welded cast iron construction.

FINISH/COLOR: Top: Natural Ash
Base: Black powder-coated protective finish

DIMENSIONS: 30" round, 1 1/4" thick top
Base (22"x22") 28" high, 17 lbs.
3" diameter steel post
Top base dimension: 13"L x 13"W

WARRANTY: One (1) Year Warranty

ADDITIONAL INFORMATION: Provide levelling glides suitable for LVT flooring.
Provide sample of finished wood for approval before ordering.

T8A specification –Cafe Table - Round

CODE: T8A

ITEM: Round Cafe Table

LOCATION: Lounge 105



QUANTITY: 1

MANUFACTURER: Superior Seating

MODEL: Solid Ash Plank Table Top SKU: TWG-PL-AW
Cross Cast Iron and Steel Black Commercial Table Base SKU: YO-BLK-3333

DESCRIPTION: Round cafe table with solid wood top and metal base. Welded cast iron construction.

FINISH/COLOR: Top: Natural Ash
Base: Black powder-coated protective finish

DIMENSIONS: 42" round, 1 1/4" thick top
Base (33"x33") 28" high, 17 lbs.
3" diameter steel post
Top base dimension: 13"L x 13"W

WARRANTY: One (1) Year Warranty

ADDITIONAL INFORMATION: Provide levelling glides suitable for LVT flooring.
Provide sample of finished wood for approval before ordering.

T9 and T9A specification –Cafe Table - Rectangular

CODE: T9

ITEM: Round Cafe Table

LOCATION: Lounge 105



QUANTITY: 2(9), 1 (9A)

MANUFACTURER: Superior Seating

MODEL: Solid Ash Plank Table Top SKU: TWG-PL-AW
Cross Cast Iron and Steel Black Commercial Table Base SKU: YO-BLK-2222

DESCRIPTION: Rectangular cafe table with solid wood top and metal base. Welded cast iron construction.

FINISH/COLOR: Top: Natural Ash
Base: Black powder-coated protective finish

DIMENSIONS: 30" x 24" x 1 1/4" thick top at **T9**
30" x 60" x 1 1/4" thick top at **T9A**
Base (22"x22") 28" high, 17 lbs.
3" diameter steel post
Top base dimension: 13"L x 13"W

WARRANTY: One (1) Year Warranty

ADDITIONAL INFORMATION: Provide levelling glides suitable for LVT flooring.
Provide sample of finished wood for approval before ordering.
Use 2 bases at T9A. Center base 12" from each end of top. (Maintain a minimum clearance of 30" between posts for accessibility requirements.)

T10 specification – Multipurpose Table Round

CODE: T10

ITEM: Multi-purpose table

LOCATION: Multi-purpose Room 107

QUANTITY: 14

MANUFACTURER: Mitylite

MODEL: ABS Round

DESCRIPTION: Round folding table, standard
laminated/laminated edge

FINISH/COLOR: Legs: Wishbone, gray finish
Top: Smooth finish – Submit samples for selection.

DIMENSIONS: 60" round, 30" H

WARRANTY: Ten (10) Year Warranty

ADDITIONAL INFORMATION: Confirm clearance under apron is 27" min. for accessibility requirements.

Provide protective glides suitable for LVT flooring.

Provide sample of finish options for approval before ordering.



T11 specification – Multipurpose Table Rectangle

CODE: T11

ITEM: Folding rectangular multipurpose tables (72x30)

LOCATION: Multi-purpose Room



QUANTITY: 20

MANUFACTURER: Mitylite

MODEL: ABS Rectangle

DESCRIPTION: Rectangle Table, 6-Feet Folding

FINISH/COLOR: Legs/Body: Metal, color to be selected
Top: Plastic, color to be selected

DIMENSIONS: 72" W x 30" D x 30" H, 30 lbs.

WARRANTY: Fifteen (15) Year Warranty

ADDITIONAL INFORMATION: Provide protective glides suitable for LVT flooring.
Provide sample of finish options for approval before ordering.

T12 specification – Card Table

CODE: T12

ITEM: Folding card tables

LOCATION: Activity Room #3 208

QUANTITY: 6

MANUFACTURER: Uline

MODEL: H-4207

DESCRIPTION: Square Table, 3-Feet, Locking steel legs. Folds up for compact storage.

FINISH/COLOR: Legs/Body: Metal
Top: Plastic

DIMENSIONS: 36" x 36" x 29" H

WARRANTY: Ten (10) Year Warranty



T13 specification – Conference Table

CODE: T13

ITEM: Conference Table

LOCATION: Meeting Room 239



QUANTITY: 1

MANUFACTURER: OFS

MODEL: Eleven Wood Collaborative

DESCRIPTION: Wood veneer knife edge top with metal base

FINISH/COLOR: Legs/Body: Metal finish to be selected
Top: Wood finish to be selected

DIMENSIONS: 84" W x 42" D x 29" H

WARRANTY: Ten (10) Year Warranty (CONFIRM)

ADDITIONAL INFORMATION: Wire management solution to be confirmed.
Provide adjustable glides suitable for carpet.
Provide sample of finish options for approval before ordering.
Price alternate HPL top.

T14– Art Table

CODE: T14

ITEM: Program Room Tables

LOCATION: Activity Rooms 235, 237, 208



QUANTITY: 6

MANUFACTURER: Smith System

MODEL: 25212BUTCHER Planner Studio 36"x72" Butcher Block Table w/casters

DESCRIPTION: 1 3/4"-thick birchwood surface with a steel frame and leg system that supports up to 400 pounds.

FINISH/COLOR: Legs: Metal, finish to be selected
Top: Butcher Block

DIMENSIONS: 72" W x 36" D x 29" H

WARRANTY: Ten (10) Year Warranty

ADDITIONAL INFORMATION:

T15, T15A specification – Activity Table

CODE: T15, T15A

ITEM: Program Room Tables

LOCATION: Activity Rooms 235, 237, 208



QUANTITY: 20 (T13), 2 (T-13A)

MANUFACTURER: KI

MODEL: T15 - Pirouette® Tables - Fixed Height Base, Nesting Top-Rectangular-29" High (Training)
T Base 30" x 60" PINR3060T, 74P edge

T-15A - Pirouette HA Tables – Pneumatic Adjustable T Base 30 x 60" PPFR3060, 74P edge

DESCRIPTION: Rectangular tables with nesting tops. Tops are 1 ¼" thick particleboard with .030 high pressure laminate top and .028" phenolic backer.

T-13A Base adjusts from 29" - 44" Quick, easy and toolless infinite adjustments by squeezing activator handle.

FINISH/COLOR: Legs/Body: Metal, finish to be selected
Top: HPL, color to be selected

DIMENSIONS: 60" W x 30" D x 29" H

WARRANTY: Ten (10) Year Warranty

ADDITIONAL INFORMATION: Confirm clearance under support is 27" min. for accessibility requirements.

Provide protective adjustable height glides suitable for LVT flooring.

Provide loaner table and sample of finish options for approval before ordering.

T16 Specification – Pounding Table

CODE: T16

ITEM: Pounding Table

LOCATION: Ceramics Room 206

QUANTITY: 1

MANUFACTURER: ?

MODEL: ?

DESCRIPTION: ?

FINISH/COLOR: Legs:
Top:

DIMENSIONS: 48" W x 48" D x 34" H

WARRANTY: Ten (10) Year Warranty

ADDITIONAL INFORMATION:

T17 Specification – Ceramics work table

CODE: T17

ITEM: Work Table for slab roller

LOCATION: Ceramics Room 206

QUANTITY: 1

MANUFACTURER: ?

MODEL: ?

DESCRIPTION: ?

FINISH/COLOR: Legs:
Top:

DIMENSIONS: 120" W x 30" D x 34" H

WARRANTY: Ten (10) Year Warranty

ADDITIONAL INFORMATION:

T18 specification – Check-in Table

CODE: T18

ITEM: Check-in Table

LOCATION: Lobby

QUANTITY: 1

MANUFACTURER: Room and Board

MODEL: Parsons Custom Table, 1.5" leg

DESCRIPTION: Rectangular table

FINISH/COLOR: Top: Marbled quartz
Legs: Lacquer

DIMENSIONS: 34" H x 18" D x 46" L

WARRANTY: Ten (10) Year Warranty



T19 Specification – Office Conference Table

CODE: T19

ITEM: Round Conference Table

LOCATION: Office 214



QUANTITY: 1

MANUFACTURER: National

MODEL: Waveworks CBV4028XBP X Base Worksurface Height
Waveworks WW48WSRNL Round Table Top

DESCRIPTION: Round top HPL with Metal X base

FINISH/COLOR: Legs: Metal finish to be selected.
Top: HPL finish to be selected.

DIMENSIONS: 48" diameter x 29" H x 1 3/16" thick

WARRANTY: Ten (10) Year Warranty

ADDITIONAL INFORMATION: Provide adjustable levelling glides suitable for carpet.
Provide samples of finishes for approval and selection before ordering.
Provide all hardware as required for complete installation.

T20 Specification – Game Table

CODE: T20

ITEM: Square Game Table

LOCATION: Game Room 317



QUANTITY: 3

MANUFACTURER: Fairfield Commercial

MODEL: Crescent Activity and Dining Table 4179-86

DESCRIPTION: Square table with solid wood legs and high-pressured laminate top with nickel ferules.

FINISH/COLOR: Legs: finish to be selected.
Top: HPL finish to be selected.

DIMENSIONS: 42" W x 42" D x 29" H

WARRANTY: Ten (10) Year Warranty (CONFIRM)

ADDITIONAL INFORMATION: Provide adjustable levelling glides suitable for LVT.
Provide samples of finishes for approval and selection before ordering.

T21 Specification – Bar Height Table

CODE: T21

ITEM: Round Bar Height Table

LOCATION: Game Room 317



QUANTITY: 2

MANUFACTURER: West Elm Contract

MODEL: Orbit Restaurant Round Bar Table – Porcelain

DESCRIPTION: Bar height round table with metal base and porcelain top. The porcelain is backed with an aluminum plate for additional durability.

FINISH/COLOR: Legs: Dark Bronze high-performance powder coat
Top: Porcelain with marble pattern with a high-performance glazed sealant.

DIMENSIONS: 30” diameter x 42” H

WARRANTY: Ten (10) Year Warranty (CONFIRM)

ADDITIONAL INFORMATION: Provide adjustable levelling glides suitable for LVT.
Provide samples of finishes for approval and selection before ordering.

TC-1 specification

CODE: TC-1

ITEM: Table Cart for 5' round tables

LOCATION: Multi-purpose Room



QUANTITY: 3

MANUFACTURER: Mitylite

MODEL: CT Cart – Edge, Narrow

DESCRIPTION: Cart for 60" round tables, Holds 5 ABS Round Tables
Frame Material: 14 gauge Steel

FINISH/COLOR: Black

DIMENSIONS: 40.1"H x 53.5" W x 50.5" L Weight: 110 lbs.
Loaded Length: 76.5" (194.3 cm) Loaded Width: 53.5" (135.9 cm) Loaded Height: 75" (190.5 cm)
Caster Size: 6"

WARRANTY: Fabricated steel components –Twelve (12) years. Felt, carpet, neoprene, foam, and plastic protective pieces, as well as cart casters are warranted for a period of One (1) year.

TC-2 specification

CODE: TC-2

ITEM: Table Cart for 6' rectangular tables

LOCATION: Multi-purpose Room



QUANTITY: 2

MANUFACTURER: Mitylite

MODEL: RT Cart – Edge

DESCRIPTION: Cart for 72" rectangular tables, Holds 10 ABS rectangular tables
Frame Material: 14 gauge Steel

FINISH/COLOR: Black

DIMENSIONS: 39.4"H x 30" W x 62.5" - 98.5" L Weight: 75 -81 lbs.
Loaded Length: 76.5" (194.3 cm) Loaded Width: 30" (135.9 cm) Loaded Height: 75" (190.5 cm)
Caster Size: 5"

WARRANTY: Fabricated steel components –Twelve (12) years. Felt, carpet, neoprene, foam, and plastic protective pieces, as well as cart casters are warranted for a period of One (1) year.

D-1, D-1A specification – Freestanding Worksurface

CODE: D1 and D1A

ITEM: Private Office Desk

LOCATION: Office 129, Office 125, Admin 123



QUANTITY: 2 (D-1), 1 (D-1A)

MANUFACTURER: National

MODEL: Alloy – 71N3060FB1NFL Single Sided Freestanding Worksurface (D-1)
Alloy – 71N3048FB1NFL Single Sided Freestanding Worksurface (D-1A)

DESCRIPTION: HPL Worksurface with Metal framed base

FINISH/COLOR: Legs: Metal color TBD
Worksurface: HPL color TBD

DIMENSIONS: 30" D x 60" W x 29" H (D-1)
30" D x 48" W x 29" H (D-1A)

WARRANTY: Limited Lifetime Warranty. Ten (10) Year Warranty Wood veneers and laminates

ADDITIONAL INFORMATION:

- All worksurfaces to be 1-3/16" thickness, HPL with 3mm PVC edge (33 standard finishes as well as CSL laminates available), round and racetrack grommets available in all worksurfaces

D2 specification - Desk

CODE: D2

ITEM: Desk

LOCATION: Kitchen

QUANTITY: 1

MANUFACTURER: Hon

MODEL: 34000 Series



DESCRIPTION: Small office desk with box/file, modesty panel and CPU holder

FINISH/COLOR: Legs: TBD
Body: TBD
Privacy Panel: TBD
Pulls: TBD

DIMENSIONS: 24" D x 29.5" H x 45 1/4" W

WARRANTY: Ten (10) Year Warranty

ADDITIONAL INFORMATION: Provide grommet for wire management and CPU holder.

D3 specification - Private Office Desk

CODE: D2

ITEM: Private Office Desk

LOCATION: Office 214



QUANTITY: 1

MANUFACTURER: National

MODEL: Waveworks

DESCRIPTION: Single pedestal desk with: Rectangular Worksurface WW3072WSSDL, Pedestal undersurface box box file WW2915PUBBFL, support pedestal WW291529SESL, Modesty Panel Full overlay WW7227MPL.

FINISH/COLOR: Legs: TBD
Body: TBD
Privacy Panel: TBD
Pulls: TBD

DIMENSIONS: 30" D x 72" W x 29" H

WARRANTY: Limited Lifetime Warranty. Ten (10) Year Warranty wood veneers and laminates

ADDITIONAL INFORMATION:

- Special size to be made up of components. Provide any additional support hardware as needed for a complete installation.
- All worksurfaces to be 1-3/16" thickness, HPL with 3mm PVC edge (33 standard finishes as well as CSL laminates available), round and racetrack grommets available in all worksurfaces
- Full depth box/box/file and file/file pedestals, laminate, locking - 17 pulls available in 5 paint colors (and 3 leather colors)
- Full height modesty, laminate

D4 specification – Adjustable Height Desk

CODE: D4

ITEM: Adjustable Height Desk

LOCATION: Office 129, Office 125, Admin. 123



QUANTITY: 3

MANUFACTURER: National

MODEL: Naviyd 65N2959DASTL

DESCRIPTION: 29" Deep Rectangular Worksurface T-Leg Standard Height Adjustable Base, Base includes control box, 9' power cord, and standard up/down control switch.

FINISH/COLOR: Legs: Metal color TBD
Worksurface: HPL color TBD

DIMENSIONS: 30" D x 60" W x 26"-42 ½" H

WARRANTY: Limited Lifetime Warranty. Ten (10) Year Warranty Wood veneers and laminates

ADDITIONAL INFORMATION:

- All worksurfaces to be 1-3/16" thickness, HPL with 3mm PVC edge (33 standard finishes as well as CSL laminates available), round and racetrack grommets available in all worksurfaces.

D5 specification – Private Office Desk

CODE: D5

ITEM: U shaped desk

LOCATION: Office 128, Office 215, Office 212, Private Program 216



QUANTITY: 4

MANUFACTURER: National

MODEL: Waveworks WW3072DUL Laminate, NAC0428SFRNB post

DESCRIPTION: U shaped desk with corner support panel and metal post.

FINISH/COLOR: Legs: Metal color TBD
Worksurface: HPL color TBD

DIMENSIONS: 30" D x 72" W x 29" H

WARRANTY: Limited Lifetime Warranty. Ten (10) Year Warranty Wood veneers and laminates

ADDITIONAL INFORMATION:

- All worksurfaces to be 1-3/16" thickness, HPL with 3mm PVC edge (33 standard finishes as well as CSL laminates available), round and racetrack grommets available in all worksurfaces.
- Provide all hardware as required for complete installation with return as shown on plans.
- Provide levelling glides suitable for carpet.
- Refer to plans for left or right configuration.

D5 specification – Private Office Desk Return

CODE: DR-5, DR-5A

ITEM: Return with pedestal

LOCATION: Office 128, Office 215, Office 212 (DR-5), Private Program 216 (DR-5A)



Left shown

QUANTITY: 4

MANUFACTURER: National

MODEL: Waveworks WW2448RLEFL1, WW2448RREFL1 Laminate (DR-5)

Waveworks WW2442RLEFL1, WW2442RREFL1 Laminate (DR-5A)

DESCRIPTION: U shaped desk with corner support panel and metal post.

FINISH/COLOR: HPL color TBD

DIMENSIONS: 24" D x 42" W x 29" H

WARRANTY: Limited Lifetime Warranty. Ten (10) Year Warranty Wood veneers and laminates

ADDITIONAL INFORMATION:

- All worksurfaces to be 1-3/16" thickness, HPL with 3mm PVC edge (33 standard finishes as well as CSL laminates available), round and racetrack grommets available in all worksurfaces.
- Provide all hardware as required for complete installation with desk as shown on plans.
- Provide levelling glides suitable for carpet.
- Refer to plans for left or right configuration.

F-1 specification – File Cabinet

CODE: F-1

ITEM: 3 Drawer File Cabinet with finished top

LOCATION: Admin 123



QUANTITY: 1

MANUFACTURER: National

MODEL: Waveworks WW2436LFM2O1L Laminate

DESCRIPTION: Open Cubby 2 drawer lateral file cabinet

FINISH/COLOR: HPL color TBD
Pulls to be selected

DIMENSIONS: 24" D x 36" W x 40 3/16" H

WARRANTY: Limited Lifetime Warranty. Ten (10) Year Warranty Wood veneers and laminates

ADDITIONAL INFORMATION:

- All worksurfaces to be 1-3/16" thickness, HPL with 3mm PVC edge (33 standard finishes as well as CSL laminates available), round and racetrack grommets available in all worksurfaces.
- Provide adjustable levelling glides suitable for carpet.

S-1 specification – Bookcase

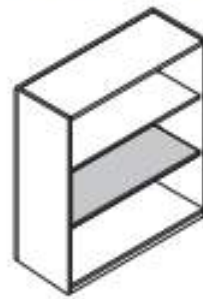
CODE: S-1

ITEM: Bookcase

LOCATION: Office 125, Admin 123



2 SHELF OPEN BOOKCASE



QUANTITY: 2

MANUFACTURER: National

MODEL: Waveworks WW3640BCOFL Laminate

DESCRIPTION: 2 Shelf Open Bookcase, shaded shelf is adjustable.

FINISH/COLOR: HPL color TBD

DIMENSIONS: 14" D x 36" W x 40 3/16" H

WARRANTY: Limited Lifetime Warranty. Ten (10) Year Warranty Wood veneers and laminates

ADDITIONAL INFORMATION:

- All worksurfaces to be 1-3/16" thickness, HPL with 3mm PVC edge (33 standard finishes as well as CSL laminates available), round and racetrack grommets available in all worksurfaces.
- Provide adjustable levelling glides suitable for carpet.

S-2 specification – Mobile Pedestal

CODE: S-2

ITEM: Cushion-Top Box/File

LOCATION: Office 129, Office 125



QUANTITY: 3

MANUFACTURER: National

MODEL: Waveworks Laminate WW2315PMBFCL

Price Alternate: Metal WW2315PMBFC2M

DESCRIPTION: Mobile Pedestal – Cushion Top Box/File 23” Deep with Pull

FINISH/COLOR: HPL or Metal color TBD, seating textile upholstery Grade 4, TBD

DIMENSIONS: 22 3/4" Dx 14 15/16" W x 23 3/4" H

WARRANTY: Limited Lifetime Warranty. Ten (10) Year Warranty Wood veneers and laminates

ADDITIONAL INFORMATION:

- Provide casters suitable for carpet.
- Provide integral counterweights.
- Drawers to have ADA compliant pulls. Pull to be selected.

S-2A specification – Mobile Pedestal

CODE: S-2A

ITEM: Cushion-Top Box/File

LOCATION: Admin 123



QUANTITY: 3

MANUFACTURER: Kimball

MODEL: Footprint Metal 12S2415PMBFCTM1

DESCRIPTION: Metal Mobile Box File with Cushion Seat

FINISH/COLOR: Metal color TBD, seating textile upholstery Grade 4, TBD

DIMENSIONS: 22 3/4" Dx 14 15/16" W x 22 5/8" H

WARRANTY: Limited Lifetime Warranty.

ADDITIONAL INFORMATION:

- Provide casters suitable for carpet.
- Provide integral counterweights.
- Drawers to have ADA compliant pulls. Pull to be selected.

S-2B specification – Mobile Pedestal

CODE: S-2B

ITEM: Mobile Pedestal

LOCATION: Reception 102



QUANTITY: 2

MANUFACTURER: National

MODEL: Waveworks Metal WW2415PMBBFM

DESCRIPTION: Box/Box/File rolling pedestal

CONSTRUCTION: 5/8" thick drawer front consists of 22-gauge cold-rolled steel, Silencing bumpers ensure quiet drawer operation, Cinder steel drawer interiors, Drawer body consists of 22-gauge cold-rolled steel, Drawers cannot be bottom loaded. File drawers have full extension, progressive action slides with precision steel ball bearings, Box drawers have full extension slides with ball bearing rollers.

FINISH/COLOR: Powder Coated paint to be selected.

DIMENSIONS: 22 3/4" D x 15" W x 27" H

WARRANTY: Ten (10) Year Warranty

ADDITIONAL INFORMATION:

- Confirm dimensions to fit under reception desk.
- Provide leveling glides suitable for carpet.

S-2C specification –Pedestal

CODE: S-2C

ITEM: Pedestal Box/Box/File

LOCATION: Private Program 217



QUANTITY: 1

MANUFACTURER: National

MODEL: Waveworks Metal WW2315PUBBFM

DESCRIPTION: Under worksurface Box/Box/File pedestal

CONSTRUCTION: 5/8" thick drawer front consists of 22-gauge cold-rolled steel, Silencing bumpers ensure quiet drawer operation, Cinder steel drawer interiors, Drawer body consists of 22-gauge cold-rolled steel, Drawers cannot be bottom loaded. File drawers have full extension, progressive action slides with precision steel ball bearings, Box drawers have full extension slides with ball bearing rollers.

FINISH/COLOR: Powder Coated paint to be selected.

DIMENSIONS: 22 3/4" D x 15" W x 27 1/4" H

WARRANTY: Ten (10) Year Warranty

ADDITIONAL INFORMATION:

- Provide leveling glides suitable for carpet.
- Provide all hardware as required for a complete installation.

S-2D specification –Pedestal

CODE: S-2C

ITEM: Pedestal File/File

LOCATION: Private Program 217



QUANTITY: 1

MANUFACTURER: National

MODEL: Waveworks Metal WW2315PUFFM

DESCRIPTION: Under worksurface Pedestal File/File

CONSTRUCTION: 5/8" thick drawer front consists of 22-gauge cold-rolled steel, Silencing bumpers ensure quiet drawer operation, Cinder steel drawer interiors, Drawer body consists of 22-gauge cold-rolled steel, Drawers cannot be bottom loaded. File drawers have full extension, progressive action slides with precision steel ball bearings, Box drawers have full extension slides with ball bearing rollers.

FINISH/COLOR: Powder Coated paint to be selected.

DIMENSIONS: 22 3/4" D x 15" W x 27 1/4" H

WARRANTY: Ten (10) Year Warranty

ADDITIONAL INFORMATION:

- Provide leveling glides suitable for carpet.
- Provide all hardware as required for a complete installation.

S-3 specification – Storage Wardrobe – File-File

CODE: S-3

ITEM: Storage Wardrobe with Files

LOCATION: Office 129



QUANTITY: 1

MANUFACTURER: National

MODEL: Waveworks WW2468VHHL2L

Price Alternate: Waveworks Metal WW2454VSHHL2M

DESCRIPTION: Storage Wardrobe with coat rod, two file drawers and one removable shelf in closed cabinet.

FINISH/COLOR: HPL or Metal color TBD

DIMENSIONS: 23 7/8" D x 24" W x 54 3/8" H

WARRANTY: Limited Lifetime Warranty. Ten (10) Year Warranty Wood veneers and laminates

ADDITIONAL INFORMATION:

- Provide casters suitable for carpet.
- Provide integral counterweights.
- Drawers to have ADA compliant pulls. Pull to be selected.

S-4 specification – Storage Wardrobe

CODE: S-4

ITEM: Storage Wardrobe with shelves

LOCATION: Office 214



QUANTITY: 1

MANUFACTURER: National

MODEL: Waveworks WW1868VSWHRL

DESCRIPTION: Storage Wardrobe with removable coat rod, one fixed shelf and two adjustable shelves.

FINISH/COLOR: HPL color TBD

DIMENSIONS: 23 9/16" D x 17 15/16" W x 66 7/8" H

WARRANTY: Limited Lifetime Warranty. Ten (10) Year Warranty Wood veneers and laminates

ADDITIONAL INFORMATION:

- Provide casters suitable for carpet.
- Provide integral counterweights.
- Drawers to have ADA compliant pulls. Pull to be selected.

S-5 specification – Storage Credenza

CODE: S-5

ITEM: Storage Credenza

LOCATION: Office 214



QUANTITY: 1

MANUFACTURER: National

MODEL: Waveworks WW18A72WSSDL Worksurface
WW1718PUBBFL Pedestal Undersurface Box/Box/File
WW1718PUFFL Pedestal Undersurface File/File
WW1736PUHL Double Door Unit Undersurface
NACGB1 Ganging Brackets (2)

DESCRIPTION: Storage Credenza –by components for 18” x 72” finished unit

FINISH/COLOR: HPL TBD, Pulls to be selected.

DIMENSIONS: 18 1/8” D x 72 1/16” W x 1 3/16” H Worksurface
16 15/16” D x 17 15/16” W x 27 3/4” H Box/Box/File
16 15/16” D x 17 15/16” W x 27 3/4” H File/File
16 15/16” D x 35 7/8” W x 27 3/4” H Double Door Storage Unit

WARRANTY: Limited Lifetime Warranty. Ten (10) Year Warranty Wood veneers and laminates

ADDITIONAL INFORMATION:

- All worksurfaces to be 1-3/16” thickness, HPL with 3mm PVC edge.
- Provide leveling glides suitable for carpet.
- Provide integral counterweights.
- Drawers to have ADA compliant pulls. Provide finished back and all hardware as required for complete installation.

S-6 specification – Storage Credenza

CODE: S-6

ITEM: Storage Credenza

LOCATION: Meeting Room 239



QUANTITY: 1

MANUFACTURER: National

MODEL: Waveworks WW18A36WSSDW Worksurface
WW1736PUHW Double Door Unit Undersurface

DESCRIPTION: Storage Credenza –by components for 18” x 36” finished unit
Wood Veneer with solid wood edge band.

FINISH/COLOR: Wood Finish TBD, Pulls to be selected.

DIMENSIONS: 18 1/8” D x 36 1/16” W x 1 3/16” H Worksurface
16 15/16” D x 35 7/8” W x 27 3/4” H Double Door Storage Unit

WARRANTY: Limited Lifetime Warranty. Ten (10) Year Warranty Wood veneers and laminates

ADDITIONAL INFORMATION:

- All worksurfaces to be 1-3/16” thickness, HPL with 3mm PVC edge.
- Provide leveling glides suitable for carpet.
- Doors to have ADA compliant pulls. Provide finished back and all hardware as required for complete installation.

S-6A specification – Storage Credenza

CODE: S-6A

ITEM: Storage Credenza

LOCATION: Fitness 303



QUANTITY: 1

MANUFACTURER: National

MODEL: Waveworks WW1836WSSDL Worksurface
WW1736PUHF Double Door Unit Undersurface

DESCRIPTION: Storage Credenza –by components for 18” x 36” finished unit

FINISH/COLOR: HPL, color TBD, Pulls to be selected.

DIMENSIONS: 18 1/8” D x 36 1/16” W x 1 3/16” H Worksurface
16 15/16” D x 35 7/8” W x 27 3/4” H Double Door Storage Unit

WARRANTY: Limited Lifetime Warranty. Ten (10) Year Warranty Wood veneers and laminates

ADDITIONAL INFORMATION:

- All worksurfaces to be 1-3/16” thickness, HPL with 3mm PVC edge.
- Provide leveling glides suitable for carpet.
- Doors to have ADA compliant pulls. Provide finished back and all hardware as required for complete installation.

S-7 specification – Storage Cabinets

CODE: S-7

ITEM: Storage Cabinets for Art

LOCATION: Art 205

QUANTITY: 3

MANUFACTURER: ?

MODEL: ?

DESCRIPTION: ?

CONSTRUCTION: ?

FINISH/COLOR: To be selected

DIMENSIONS: 29" H x 26.5" D x 72" W

WARRANTY: Ten (10) Year Warranty

ADDITIONAL INFORMATION:

- Provide leveling glides suitable for hard floors

S-8, S-8A specification – Shelving

CODE: S-8

ITEM: Shelving units

LOCATION: Ceramics 206

QUANTITY: 2 (S-8), 1 (S-8A)

MANUFACTURER:

MODEL:

DESCRIPTION:

CONSTRUCTION:

FINISH/COLOR: To be selected

DIMENSIONS: 72" H x 16" D x 60" W (S-8)
72" H x 12" D x 36" W (S-8A)

WARRANTY: Ten (10) Year Warranty

ADDITIONAL INFORMATION:

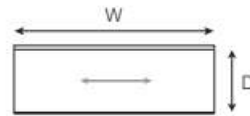
- Provide leveling glides suitable for hard floors.

WS-1 specification – Open Office Workstation

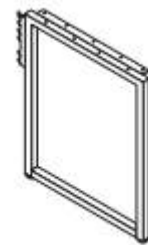
CODE: WS-1

ITEM: Worksurface

LOCATION: Admin 123



Note: Bold line indicates location of rim detail; double line indicates location of wire manager. Arrow on surface indicates grain direction.



QUANTITY: 2

MANUFACTURER: Kimball

MODEL: Footprint SS3060WSS, P rim
Footprint 81W3027SLORP End support O legs

DESCRIPTION: Panel hung worksurface with wire manger, Metal support leg

CONSTRUCTION: Wire manager profile work surfaces have a flexible rubber trough that allows cords and cables to be routed along the back edge of the worksurface. Sides on 1 3/16" laminate surfaces with softened vinyl rim (P) are finished to match the rim.

FINISH/COLOR: HPL to be selected.

DIMENSIONS: 29 7/8" D x 59 7/8" W x 1 3/16" H Worksurface
30" D x 1 3/4" W x 27 9/16" H End support O leg

WARRANTY: Ten (10) Year Warranty

ADDITIONAL INFORMATION:

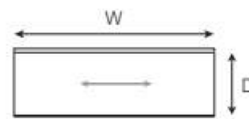
- Provide O leg at end, support brackets as required at panel joints. and all hardware as required for complete installation.
- See plan for proper handing of components.

WS-2 specification – Open Office Workstation

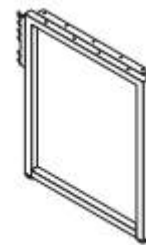
CODE: WS-2

ITEM: Worksurface

LOCATION: Admin 123



Note: Bold line indicates location of rim detail; double line indicates location of wire manger. Arrow on surface indicates grain direction.



QUANTITY: 2

MANUFACTURER: Kimball

MODEL: Footprint SS2460WSS, P rim
Footprint 81W2427SLOLP End support O legs

DESCRIPTION: Panel hung worksurface with wire manger, Metal support leg

CONSTRUCTION: Wire manager profile work surfaces have a flexible rubber trough that allows cords and cables to be routed along the back edge of the worksurface. Sides on 1 3/16" laminate surfaces with softened vinyl rim (P) are finished to match the rim.

FINISH/COLOR: HPL to be selected.

DIMENSIONS: 23 7/8" D x 59 7/8" W x 1 3/16" H Worksurface
24" D x 1 3/4" W x 27 9/16" H End support O leg

WARRANTY: Ten (10) Year Warranty

ADDITIONAL INFORMATION:

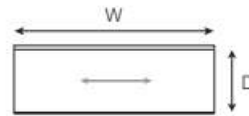
- Provide O leg at end, support brackets as required at panel joints. and all hardware as required for complete installation.
- See plan for proper handing of components.

WS-3 specification – Open Office Workstation

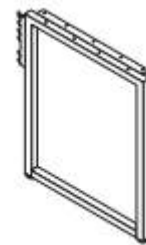
CODE: WS-3

ITEM: Worksurface

LOCATION: Admin 123



Note: Bold line indicates location of rim detail; double line indicates location of wire manager. Arrow on surface indicates grain direction.



QUANTITY: 2

MANUFACTURER: Kimball

MODEL: Footprint SS3066WSS, P rim
Footprint 81W3027SLORP End support O legs

DESCRIPTION: Panel hung worksurface with wire manger, Metal support leg

CONSTRUCTION: Wire manager profile work surfaces have a flexible rubber trough that allows cords and cables to be routed along the back edge of the worksurface. Sides on 1 3/16" laminate surfaces with softened vinyl rim (P) are finished to match the rim.

FINISH/COLOR: HPL to be selected.

DIMENSIONS: 29 7/8" D x 65 7/8" W x 1 3/16" H Worksurface
30" D x 1 3/4" W x 27 9/16" H End support O leg

WARRANTY: Ten (10) Year Warranty

ADDITIONAL INFORMATION:

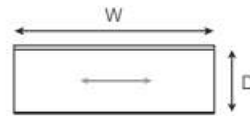
- Provide O leg at end, support brackets as required at panel joints. and all hardware as required for complete installation.
- See plan for proper handing of components.

WS-4 specification – Open Office Workstation

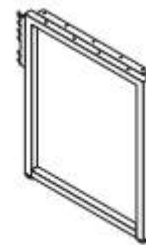
CODE: WS-4

ITEM: Worksurface

LOCATION: Admin 123



Note: Bold line indicates location of rim detail; double line indicates location of wire manager. Arrow on surface indicates grain direction.



QUANTITY: 2

MANUFACTURER: Kimball

MODEL: Footprint SS2448WSS, P rim
Footprint 81W2427SLOLP End support O legs

DESCRIPTION: Panel hung worksurface with wire manger, Metal support leg

CONSTRUCTION: Wire manager profile work surfaces have a flexible rubber trough that allows cords and cables to be routed along the back edge of the worksurface. Sides on 1 3/16" laminate surfaces with softened vinyl rim (P) are finished to match the rim.

FINISH/COLOR: HPL to be selected.

DIMENSIONS: 23 7/8" D x 47 7/8" W x 1 3/16" H Worksurface
24" D x 1 3/4" W x 27 9/16" H End support O leg

WARRANTY: Ten (10) Year Warranty

ADDITIONAL INFORMATION:

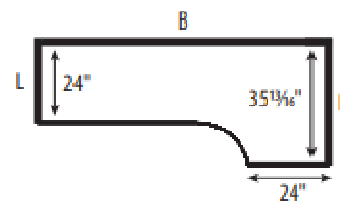
- Provide O leg at end, support brackets as required at panel joints. and all hardware as required for complete installation.
- See plan for proper handing of components.

WS-5 specification – Worksurface

CODE: WS-5

ITEM: Worksurface

LOCATION: Private Program 217



Left shown

QUANTITY: 1

MANUFACTURER: National

MODEL: Waveworks WW3660WSCEDRL2

DESCRIPTION: Extended Corner Worksurface

FINISH/COLOR: HPL color to be selected

DIMENSIONS: 35 13/16" D x 60" W x 1 3/16" H

WARRANTY: Limited Lifetime Warranty. Ten (10) Year Warranty Wood veneers and laminates

ADDITIONAL INFORMATION:

- All worksurfaces to be 1-3/16" thickness, HPL with 3mm PVC edge (33 standard finishes as well as CSL laminates available), round and racetrack grommets available in all worksurfaces.
- Provide all hardware as required for complete installation with desk as shown on plans.
- Provide levelling glides suitable for carpet.
- Refer to plans for left or right configuration.

WS-6 specification –Worksurface

CODE: WS-6

ITEM: Worksurface

LOCATION: Private Program 217



QUANTITY: 1

MANUFACTURER: National

MODEL: Waveworks WW2472WSSDL

DESCRIPTION: Rectangle Worksurface

FINISH/COLOR: HPL color to be selected

DIMENSIONS: 24" D x 71 15/16" W x 1 3/16" H

WARRANTY: Limited Lifetime Warranty. Ten (10) Year Warranty Wood veneers and laminates

ADDITIONAL INFORMATION:

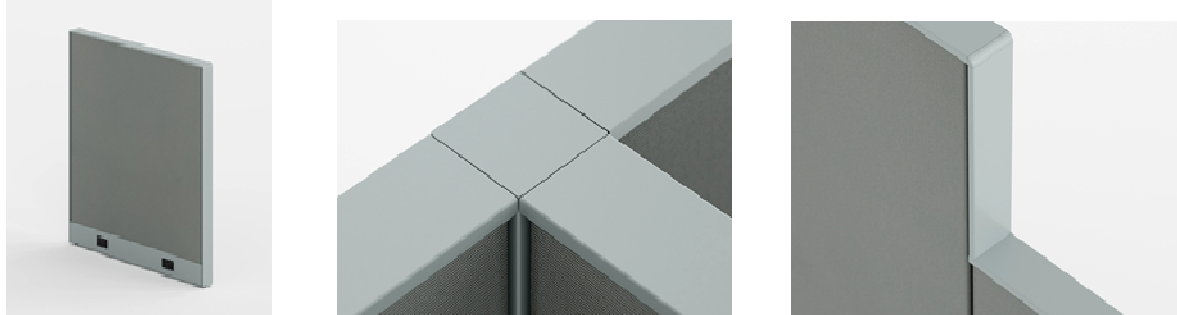
- All worksurfaces to be 1-3/16" thickness, HPL with 3mm PVC edge (33 standard finishes as well as CSL laminates available), round and racetrack grommets available in all worksurfaces.
- Provide all hardware as required for complete installation with desk as shown on plans.
- Provide support bracket as required at connection of worksurfaces.
- Provide levelling glides suitable for carpet.
- Refer to plans for left or right configuration.

P-1 specification – Open Office Workstation Panels

CODE: P-1

ITEM: Panels

LOCATION: Admin 123



QUANTITY: (2) 60 x 48 powered panels
(1) 30 x 48 (1) 24 x 48 (1) 60 x 42, (1) 30 x 42 non-powered panels
(1) 48" T connector, (1) 42" L connector, (2) 48" end trim, (1) 42" end trim, (1) hi-lo trim

MANUFACTURER: Kimball

MODEL: Eтарran 81P6048A, powered panel
Eтарran 81P3048A, 81P2448A, 81P6042A, 81P3042A, 81P2442A, non-powered panel
Eтарran 81P48ETP (48" end trim), Eтарran 81P48CTPP (48" 3 way connector)
Eтарran 81P42CLPP (42" 2 way connector)
Eтарran 81P06HSCP (6 5/16" Hi-Lo trim, panel to panel)
81P60WCPDP base power entry, 81P60WCPDP Power Data Covers

DESCRIPTION: Fabric wrapped workstation panels with metal trim and power base at center spine

CONSTRUCTION: Panel: vertical textile with a fiberglass core, Top cap: metal, Wireway covers: metal, Power distribution assembly, if powered panel is selected, Attachment brackets

FINISH/COLOR: Textile price grade A to be selected. Metal color to be selected.

DIMENSIONS: 2 1/2" D x 60" W x 48 25/32" H Panel, 2 1/2" D x 30" W x 48 25/32" H Panel, 2 1/2" D x 24" W x 48 25/32" H Panel, 2 1/2" D x 60" W x 42 31/64" H Panel, 2 1/2" D x 30" W x 42 31/64" H Panel

WARRANTY: Ten (10) Year Warranty

ADDITIONAL INFORMATION:

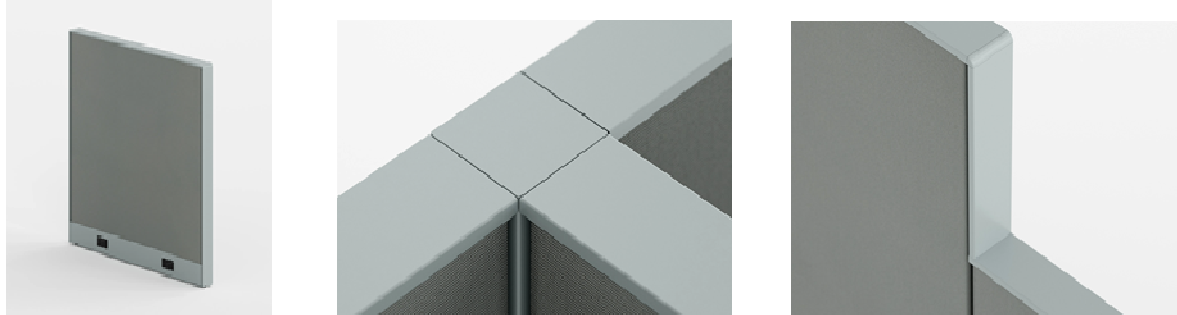
- Provide O leg at end, support brackets as required at panel joints. and all hardware as required for complete installation.
- See plan for configuration of components.

P-2 specification – Open Office Workstation Panels

CODE: P-2

ITEM: Panels

LOCATION: Senior Services 213



QUANTITY: (2) 48 x 54, (2) 30 x 54 powered panels, (4) 24 x 42 (4) 42 x 42, non-powered panels
(1) 54" X connector, (1) 54" T connector, (1) 54" end trim, (4) 42" end trim, (2) hi-lo trim
connector to panel, (1) base power entry, (2) 30" Power/Data covers, (2) 48" Power/Data
covers

MANUFACTURER: Kimball

MODEL: Etarran 81P4854A, 81P3054A, powered panel
Etarran 81P2442A, 81P4242A, non-powered panel
Etarran 81P42ETP (42" end trim),
Etarran 81P54CTPP (54" 3 way connector)
Etarran 81P12HT CP (12 9/16" Hi-Lo trim, connector to panel)
81PEF1U8 base power entry, 81P30WCPDP, 81P48WCPDP Power/Data covers,

DESCRIPTION: Fabric wrapped workstation panels with metal trim and power base at center spine

CONSTRUCTION: Panel: vertical textile with a fiberglass core, Top cap: metal, Wireway covers: metal,
Power distribution assembly, if powered panel is selected, Attachment brackets

FINISH/COLOR: Textile price grade A to be selected. Metal color to be selected.

DIMENSIONS: 2 1/2" D x 48" W x 55 5/64" H Panel, 2 1/2" D x 30" W x 54 5/64" H Panel, 2 1/2" D
x 24" W x 42 31/64" H Panel, 2 1/2" D x 42" W x 42 31/64" H Panel

WARRANTY: Ten (10) Year Warranty

ADDITIONAL INFORMATION:

- Provide O leg at end, support brackets as required at panel joints. and all hardware as required for complete installation.
- See plan for configuration of components.

OC-1 Specification – Outdoor Chair

CODE: OC-1

ITEM: Outdoor Chair

LOCATION: Roof Deck 321



QUANTITY: 14

MANUFACTURER: Westminster Teak

MODEL: 12152DP - Laguna Teak Lounge Chair
62152DP - Laguna Lounge Chair Cover

DESCRIPTION: Natural solid teak chair with cushions, 100% Grade A Plantation Teak

FINISH/COLOR: Teak: Natural, Cushion fabric Sunbrella, color to be selected.

DIMENSIONS: 34.5" L x 29.25" W x 32.5" H
23.5" Inside Seat Width x 25.5" Inside Seat Depth
12" Seat Height 22.75" Arm Height, 22.5" Inside Seat Depth
Arm Width-2.75", Weight: 49 lbs.

WARRANTY: Teak	Lifetime *
Stainless Steel	5 years
Sunbrella Fabric	5 years
Cushions/Parasol	1 Year Manufacturer's Warranty on Stitching
Brass	3 years
Dur Last cover	3 Year Warranty

ADDITIONAL INFORMATION: Includes Large Levelers for floor protection.

Cushion yardage: 5 yards.

Cover: High UV and mildew/mold resistance, Water Resistant, Excellent tear and abrasion resistance, Free air flow to prevent the growth of mold and mildew.

OC-2 Specification – Outdoor Sofa

CODE: OC-2

ITEM: Outdoor Sofa

LOCATION: Roof Deck 321



QUANTITY: 1

MANUFACTURER: Westminster Teak

MODEL: 13152DP - Laguna Sofa
63152DP - 13152 Laguna Sofa Cover - For Product ID 13152DP

DESCRIPTION: Natural solid teak sofa with cushions, 100% Grade A Plantation Teak

FINISH/COLOR: Teak: Natural, Cushion fabric Sunbrella, color to be selected.

DIMENSIONS: 66" L x 34.5" W x 32.5" H
Inside Seat Length - 60" L, Inside Seat Depth - 25.5"
Seat Height Without Cushion - 12" High
Seat Height With Cushion - 16" High, 22.75" Arm Height
Weight 85 lbs.

WARRANTY: Teak	Lifetime *
Stainless Steel	5 years
Sunbrella Fabric	5 years
Cushions/Parasol	1 Year Manufacturer's Warranty on Stitching
Brass	3 years
Dur Last cover	3 Year Warranty

ADDITIONAL INFORMATION: Includes Large Levelers for floor protection.

Cushion yardage: 11 yards.

Cover: High UV and mildew/mold resistance, Water Resistant, Excellent tear and abrasion resistance, Free air flow to prevent the growth of mold and mildew.

OC-1 and 2 Specification – Outdoor Cushions

CODE: OC-1 and OC-2

ITEM: Cushions for Outdoor Chairs and Sofa

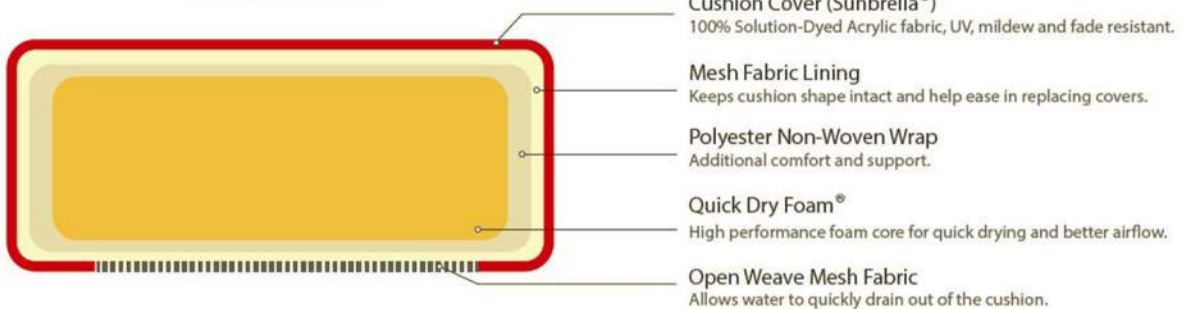
LOCATION: Roof Deck 321



THE WESTMINSTER CUSHION



WHAT'S INSIDE



QUANTITY: See OC-1 and OC-2 specifications.

MANUFACTURER: Westminster Teak

MODEL: The Westminster Cushion

DESCRIPTION: Cushion Cover – Sunbrella, 100% Solution-Dyed Acrylic fabric, UV, mildew, and fade resistant.

Mesh Fabric Lining – Keeps cushion shape intact and help ease in replacing covers.

Polyester Non-Woven Wrap

Quick Dry Foam – High performance open cell, reticulated foam, mold, mildew, and UV resistant.

Open Weave Mesh Fabric – Allows water to quickly drain out of the cushion.

FINISH/COLOR: Cushion fabric Sunbrella, color to be selected.

DIMENSIONS: See chair sizes.

WARRANTY: Sunbrella Fabric 5 years
Cushions/Parasol 1 Year Manufacturer's Warranty on Stitching

ADDITIONAL INFORMATION:

Cushion yardage: See information on chair specifications.

OC-3 Specification – Outdoor Chair

CODE: OC-3

ITEM: Outdoor Chair

LOCATION: Roof Deck 321, Patio First Floor



QUANTITY: 32

MANUFACTURER: Westminster Teak

MODEL: 12152DP - 12196 - Sussex Teak Chair - Stacking Chair

DESCRIPTION: Natural solid teak chair, 100% Grade A Plantation Teak

FINISH/COLOR: Teak: Natural

DIMENSIONS: 22.75" L x 21.25" W x 38" H
19" Seat width
17" Seat depth
18.5" Seat Height
Arm Height-26.75"
Arm Width-2.375"
Maximum Recommended Weight: 400 lbs.
Weight 23 lbs.

WARRANTY: Teak Lifetime *
 Stainless Steel 5 years

ADDITIONAL INFORMATION: Includes glides for floor protection.

OT-1 Specification – Outdoor Coffee Table

CODE: OT-1

ITEM: Outdoor Coffee Table and protective cover

LOCATION: Roof Deck 321



QUANTITY: 3

MANUFACTURER: Westminster Teak

MODEL: 14250 - Laguna Teak Coffee Table - 40" Diameter
64250 - Laguna Teak Coffee Table Cover

DESCRIPTION: Natural solid teak table, 100% Grade A Plantation Teak

FINISH/COLOR: Teak: Natural

DIMENSIONS: 40" Dia x 17" H
Table Top Thickness - 1"
Weight 40 lbs.

WARRANTY: Teak	Lifetime *
Stainless Steel	5 years
Dur Last cover	3 Year Warranty

ADDITIONAL INFORMATION: Includes glides for floor protection.
Cover: High UV and mildew/mold resistance, Water Resistant, Excellent tear and abrasion resistance, Free air flow to prevent the growth of mold and mildew.

OT-2 Specification – Outdoor Side Table

CODE: OT-2

ITEM: Outdoor Side Table

LOCATION: Roof Deck 321



QUANTITY: 4

MANUFACTURER: Westminster Teak

MODEL: 14140 - Laguna Teak Side Table
64140 - Laguna Teak Side Table Cover - For Product ID 14140

DESCRIPTION: Natural solid teak table, 100% Grade A Plantation Teak

FINISH/COLOR: Teak: Natural

DIMENSIONS: 22" diam. x 22" H
Table Top Thickness - 0.875"
Weight 20 lbs.

WARRANTY: Teak	Lifetime *
Stainless Steel	5 years
Sur Last Cover	3 Year Warranty

ADDITIONAL INFORMATION: Includes glides for floor protection.
Cover: High UV and mildew/mold resistance, Water Resistant, Excellent tear and abrasion resistance, Free air flow to prevent the growth of mold and mildew.

OT-3 Specification – Outdoor Dining Table

CODE: OT-3

ITEM: Outdoor Dining Table and protective storage cover

LOCATION: Roof Deck 321



QUANTITY: 1

MANUFACTURER: Westminster Teak

MODEL: 15867 - 5 ft Barbuda Table - 60 inch Round Foldable Table
65867FL - 5 ft Barbuda Table Folded Position Cover

DESCRIPTION: Natural solid teak table, 100% Grade A Plantation Teak with hole for umbrella

FINISH/COLOR: Teak: Natural

DIMENSIONS: Diameter 60" x 29.13 H
Width When Folded - 7"
Weight 88 lbs.
61" L x 8" W x 28.25" H cover

WARRANTY: Teak	Lifetime *
Stainless Steel	5 years
Sur Last Cover	3 Year Warranty

ADDITIONAL INFORMATION: Includes medium levelers for floor protection.

See next page for umbrella.

Cover: High UV and mildew/mold resistance, Water Resistant, Excellent tear and abrasion re-sistance, Free air flow to prevent the growth of mold and mildew.

OT-3 Specification – Outdoor Dining Table Umbrella

CODE: OT-3

ITEM: Umbrella

LOCATION: Roof Deck 321



QUANTITY: 1

MANUFACTURER: Westminster Teak

MODEL: 17542F - 10 ft Round Umbrella - All Teak Construction

DESCRIPTION: Natural solid teak table, 100% Grade A Plantation Teak

FINISH/COLOR: Teak: Natural

DIMENSIONS: Diameter 118.12"
pole - 1.95 inches dia.
Umbrella Height 105"
Fabric Required 8.00 Yards of Fabric for COM
Weight 32 lbs.

WARRANTY: Teak	Lifetime *
Stainless Steel	5 years
Textilene	3 years
Sunbrella Fabric	5 years
Cushions/Parasol	1 Year Manufacturer's Warranty on Stitching
Brass	3 years

ADDITIONAL INFORMATION: Includes large levelers for floor protection.
Depending on the teak table selected, a parasol base may or may not be necessary.
Fabric Required 8.00 Yards of Fabric for COM

OT-4 Specification – Outdoor Dining Table

CODE: OT-4

ITEM: Outdoor Dining Table and protective storage cover

LOCATION: Patio first floor



QUANTITY: 5

MANUFACTURER: Westminster Teak

MODEL: 15047 - 4ft Round Teak Dining Table - 48" Round Table
65047 - 4ft Round Teak Dining Table Cover

DESCRIPTION: Natural solid teak table, 100% Grade A Plantation Teak with hole for umbrella

FINISH/COLOR: Teak: Natural

DIMENSIONS: 48" Dia x 29"H
Ground to Bottom of Table Top - 28.25"
Table Top Thickness - 1"
Ground to Bottom of Pedestal Base - 3/4"
Inside Bottom between legs 16.5"

WARRANTY: Teak	Lifetime *
Stainless Steel	5 years
Sur Last Cover	3 Year Warranty

ADDITIONAL INFORMATION: Includes medium levelers for floor protection.
Cover: High UV and mildew/mold resistance, Water Resistant, Excellent tear and abrasion re-sistance, Free air flow to prevent the growth of mold and mildew.

OT-5 Specification – Outdoor Dining Table

CODE: OT-5

ITEM: Outdoor Dining Table and protective storage cover

LOCATION: Patio first floor



QUANTITY: 5

MANUFACTURER: Westminster Teak

MODEL: 15005 - Bistro Teak Dining Table - 36" Square Table
65005 - Bistro Teak Dining Table Cover - For Product ID 15005

DESCRIPTION: Natural solid teak table, 100% Grade A Plantation Teak with hole for umbrella

FINISH/COLOR: Teak: Natural

DIMENSIONS: 36" L x 36" W x 29" H
From Floor to Bottom of Table is 25"
Ground to Table Apron - 25" (Raise to 27" with added levelers.)
Between Legs 31.25"
Table Top Thickness - 1"

WARRANTY: Teak	Lifetime *
Stainless Steel	5 years
Sur Last Cover	3 Year Warranty

ADDITIONAL INFORMATION: Provide long levelers for raising table to provide 27" clear knee space.
Cover: High UV and mildew/mold resistance, Water Resistant, Excellent tear and abrasion re-sistance,
Free air flow to prevent the growth of mold and mildew.

AR1 Specification - Area Rug

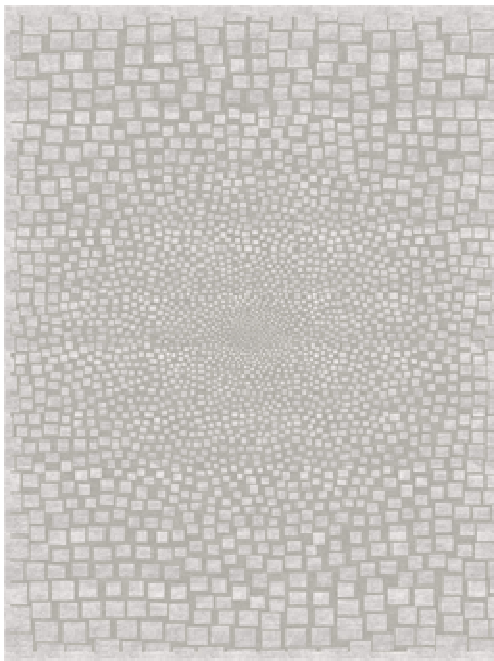
CODE: AR1 (C-7 on Finishes Plan)

ITEM: Area Rug

LOCATION: Lobby 101

QUANTITY: 1

MANUFACTURER: Modern Nature Design



MODEL: Custom Rugs

DESCRIPTION: Custom hand tufted area rug, New Zealand Wool and Tencel

FINISH/COLOR: Color palette to be selected using a standard designed pattern to be selected.

DIMENSIONS: 8'x14'

WARRANTY: One (1) Year Manufacturer's Warranty (Confirm)

AR2 Specification - Area Rug

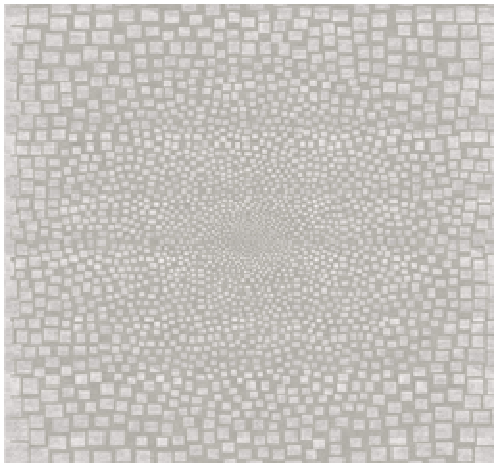
CODE: AR2 (C-8 on Finishes Plan)

ITEM: Area Rug

LOCATION: Lounge 105

QUANTITY: 1

MANUFACTURER: Modern Nature Design



MODEL: Custom Rugs

DESCRIPTION: Custom hand tufted area rug, New Zealand Wool and Tencel

FINISH/COLOR: Color palette to be selected using a standard designed pattern to be selected.

DIMENSIONS: 10'x10'

WARRANTY: One (1) Year Manufacturer's Warranty (Confirm)

AR3 specification - Area Rug

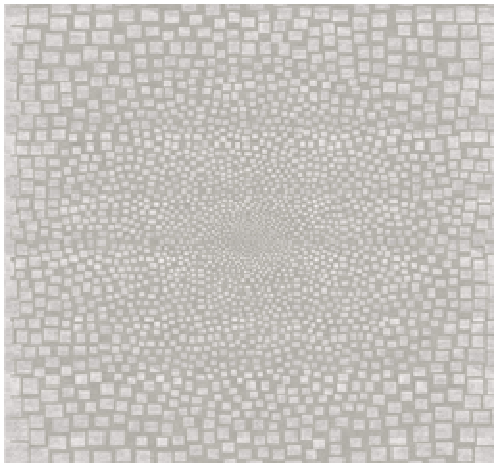
CODE:AR3 (C-9 on Finishes Plan)

ITEM: Area Rug

LOCATION: Common 201

QUANTITY: 1

MANUFACTURER: Modern Nature Design



MODEL: Custom Rugs

DESCRIPTION: Custom hand tufted area rug, New Zealand Wool and Tencel

FINISH/COLOR: Color palette to be selected using a standard designed pattern to be selected.

DIMENSIONS: 7'-0" x 7'-6"

WARRANTY: One (1) Year Manufacturer's Warranty (Confirm)

AR4 specification - Area Rug

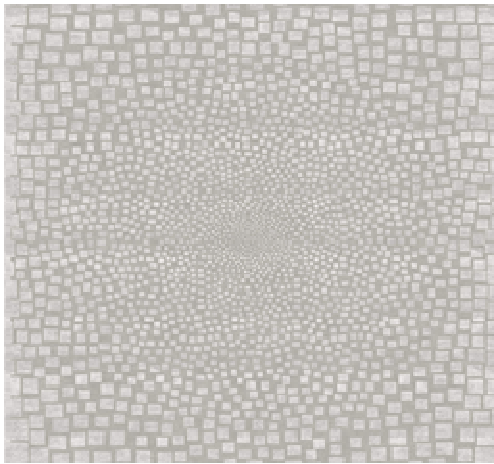
CODE:AR3 (C-10 on Finishes Plan)

ITEM: Area Rug

LOCATION: Lounge 301

QUANTITY: 1

MANUFACTURER: Modern Nature Design



MODEL: Custom Rugs

DESCRIPTION: Custom hand tufted area rug, New Zealand Wool and Tencel

FINISH/COLOR: Color palette to be selected using a standard designed pattern to be selected.

DIMENSIONS: 8'-0" x 8'-0"

WARRANTY: One (1) Year Manufacturer's Warranty (Confirm)

A3 specification - Lectern

CODE: A3

ITEM: Lectern

LOCATION: Multi-purpose Room 107, Activity 203

QUANTITY:2

MANUFACTURER: National

MODEL: Universal Lectern

DESCRIPTION: Mobile lectern

FINISH/COLOR: Veneer: TBD
Frame: TBD

DIMENSIONS: 24" D x 27" W x 46" H

WARRANTY: Ten (10) Year Warranty



A4 specification - Wall Clock

CODE: A4S-8

ITEM: Battery-Operated Wall Clock

LOCATION: Refer to FF&E Plans

QUANTITY: 10

MANUFACTURER: Bai Design

MODEL: Jumbo Wall Clock in Bodoni Titanium

DESCRIPTION: Wall clock

CONSTRUCTION: Glass, Metal, Plastic

FINISH/COLOR: Silver

DIMENSIONS: 15" Diameter

FLAMMABILITY: Must meet or exceed all applicable state codes, including CAL 133.

WARRANTY: One (1) Year Manufacturer's Warranty

ADDITIONAL INFORMATION: Include required batteries.



A7 specification - Waste Receptacle

CODE:A7

ITEM: Waste Receptacle

LOCATION: Multi-Purpose Room

QUANTITY: 1

MANUFACTURER: Lancaster

MODEL: 349TRASHB32

DESCRIPTION: Table and seating waste receptacle 35 gallon

CONSTRUCTION: Powder-coated metal frame

FINISH/COLOR: Body: Aluminum Metallic

DIMENSIONS: 38" W x 30" H x 11" D

FLAMMABILITY: Must meet or exceed all applicable state codes, including CAL 133.

WARRANTY: Five (5) Year Manufacturer's Warranty

ADDITIONAL INFORMATION:



A8 specification - Waste Receptacle

CODE: A8

ITEM: Waste Receptacle

LOCATION: Program Rooms

QUANTITY: 5

MANUFACTURER: Simple Human

MODEL: H-3621

DESCRIPTION:

CONSTRUCTION: Powder-coated metal frame

FINISH/COLOR: Body: Aluminum Metallic

DIMENSIONS: 11" L x 18" W x 28" H

FLAMMABILITY: Must meet or exceed all applicable state codes, including CAL 133.

WARRANTY: Five (5) Year Manufacturer's Warranty

ADDITIONAL INFORMATION:



H-3621

A9 specification - Recycling Receptacle

CODE: A9

ITEM: Deskside Recycling Receptacle

LOCATION: Offices and Program Rooms

QUANTITY: 15

MANUFACTURER: Rubbermaid Commercial

MODEL: 2955-73 Deskside Recycling Container

DESCRIPTION: Deskside Recycling Container with

Universal Recycling Symbol

CONSTRUCTION: Plastic

FINISH/COLOR: Body: Blue

DIMENSIONS: 11.4" L x 8.2" W x 12.1" H

FLAMMABILITY: Must meet or exceed all applicable state codes, including CAL 133.

WARRANTY: Five (5) Year Manufacturer's Warranty

ADDITIONAL INFORMATION: Locations on plans are diagrammatic. Place receptacles under desks and vanities.



A10 specification - Waste Receptacle

CODE: A10

ITEM: Deskside Waste Receptacle

LOCATION: Offices

QUANTITY: 12

MANUFACTURER: Rubbermaid Commercial

MODEL: 3 1/2 -gallon waste bin

DESCRIPTION: Deskside Recycling Waste Container

CONSTRUCTION: Plastic

FINISH/COLOR: Body: Black

DIMENSIONS: 11.4" L x 8.2" W x 12.1" H

FLAMMABILITY: Must meet or exceed all applicable state codes, including CAL 133.

WARRANTY: Five (5) Year Manufacturer's Warranty

ADDITIONAL INFORMATION: Locations on plans are diagrammatic. Place receptacles under desks and vanities.

